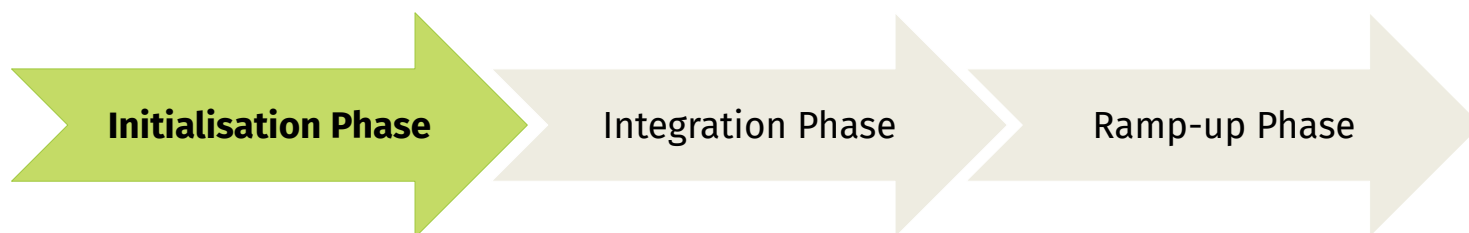


A central Jupyter Hub for the German National Research Data Infrastructure

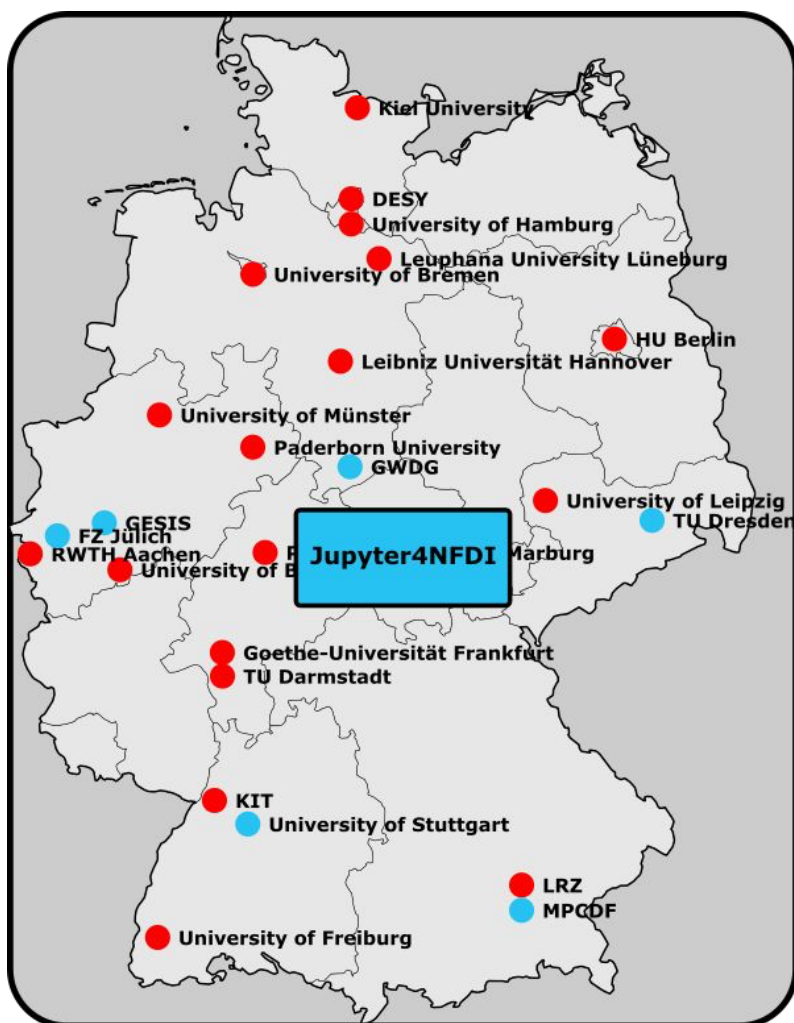


<https://base4nfdi.de/projects/jupyter4nfdi>



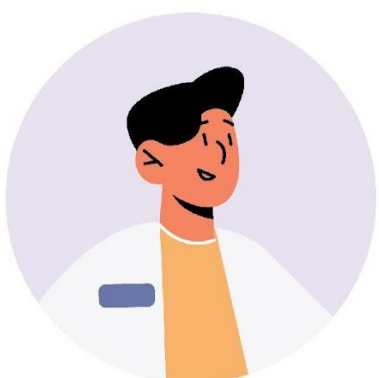
Vision

- Establish a central JupyterHub that can be accessed via a single entry point
- Provide a foundational set of computing and data resources
- Foster the creation of comprehensible and reproducible scientific results



- The **central JupyterHub** acts as an **access point** to multiple resources in the background
- Resource providers can install a "JupyterHub Outpost" to **integrate their resources with the central JupyterHub** following general standards
- Throughout the project, additional resource providers will be integrated into the central service, expanding the available **resources, environments, features, and capabilities**
- Current partners and resources:
 - Text+ (FZ Jülich, GWDG)
 - NFDI4DS (GESIS, TU Dresden, Univ. of Stuttgart)
 - FAIRmat (MPCDF)

Persona Impressions



As a **digital humanities researcher**, I analyse large text corpora and historical datasets using statistical methods. I need a reliable and accessible computing environment, but dedicated IT resources are often limited in my field. Jupyter4NFDI makes my work easier with its simple access, high uptime, and the ability to share and import materials effortlessly. Plus, it supports a wide range of computational needs, allowing me to run complex analyses efficiently.

As an **IT manager** at a research institute, I want to provide both our researchers and external collaborators easy access to our computing resources without the burden of managing separate setups for each. Jupyter4NFDI allows us to share our resources through the central Jupyter Hub, reducing overhead.

