

# Identity and Access Management for the German National Research Data Infrastructure



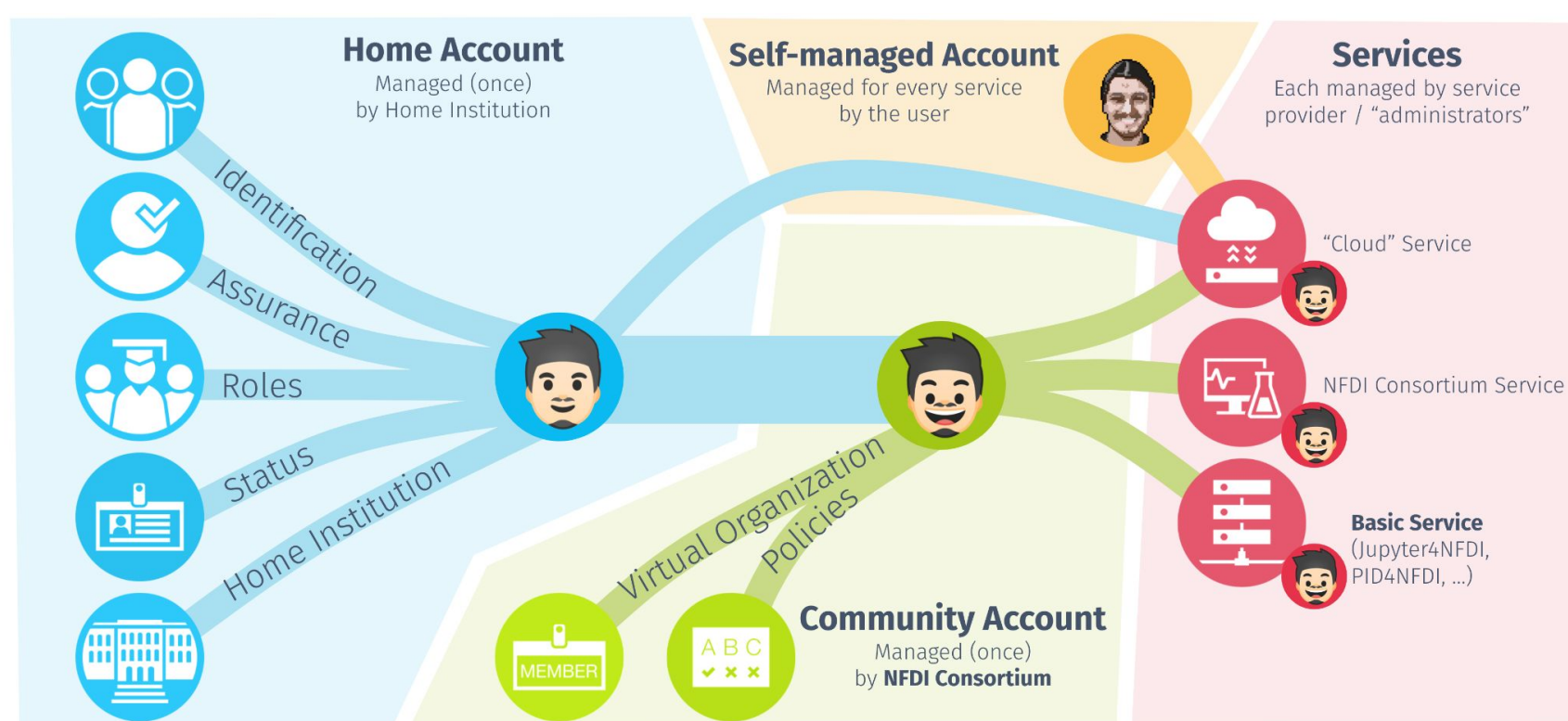
<https://base4nfdi.de/projects/iam4nfdi>



## Vision

- A single way to “sign-on” to all NFDI Services and beyond
- Develop a scalable, federated IAM system that connects existing and emerging authentication and authorization solutions
- Ensure interoperability and integration with infrastructures like the European Open Science Cloud (EOSC) and other international research platforms

## User Authorisation Process



## Persona Impressions



I am a **postdoc** and **service administrator**. My goal is to provide researchers a secure and user-friendly service. I need to ensure that only the right people get access while keeping the login process simple. With IAM4NFDI, I rely on trustworthy user information and seamless authentication tools to strike the perfect balance between security and ease of use.

I work at a **service desk** and help researchers and guest users access our services smoothly, but troubleshooting authentication issues can be a nightmare. Error messages are often unclear, and AAI is complex, making it hard to pinpoint the source of a problem. I need IAM4NFDI to provide clear responsibilities for support escalation, fast response times, and informative error messages – so I can assist users quickly and efficiently.

